

FUJIFILM

FUJIFILM



FUJIFILM

Expand the World of Imaging



FUJIFILM
Expand the World of Imaging



Frontier
Customer
Interface

GetPix™



Web & Mobile
Orders



Ordering Services

Frontier
Workflow
Management



Expanding
FRONTIER
Solutions

Image Processing

Frontier
Printing
Solutions



Frontier
Digital Lab System



Frontier
Dry MiniLab 400



FUJIFILM
ASK 2000/4000



FUJIFILM
EPSON 7880



Xerox Printer
Phaser 7760

Output Hardware

Frontier
Quality



Quality
Output Services



FUJIFILM
Expand the World of Imaging

Expand your customer's options

Partner with Fujifilm

Fujifilm understands your customer, your retail environment and your business. That's why we're your best partner to help you build and grow your business into a profitable Photo destination.

We have created imaging solutions that give your customers the products they want. Our Digital solutions are modular to fit every retail situation and are scaleable to grow as your business grows.

Fujifilm Frontier solutions meet the photofinishing needs of all your customers, whether they want to:
Print Instantly • Print in One Hour • Order Online • Get Photo Gifts
Fujifilm has a printing solution for every retailer.



FUJIFILM

GetPix™ V5 Order Terminal



- Includes GetPix™ TS Software
- Proprietary Intelligent Media Insert™ Technology
- 15" Acoustic Wave Monitor w/ Tilt Screen
 - Increases response time
 - Increases viewing angle
 - Better clarity
 - Scratch resistant
- Slot Loaded DVD R/W Drive
 - Minimizes breakage
- Built in Receipt Printer



Optional Credit Card Kit for Completely Self Service Solution



Camera Phone Upgrade Kit Available (Bluetooth and IrDA)



Pedestal and Scanner Also Available



GetPix™ V5 Order Station

Dimensions	L15" x W 21" x H 20"
Weight	95 LBS
Power Voltage and Frequency	AC 110V
Power Consumption	15 W Max
Input Media	SmartMedia, xD-PictureCard, Xd-PictureCard, CompactFlash, Memory Stick, Memory Stick Duo (Optional, SD Card, SDHC, mini-SD (Optional), MMC, RS-MMC, CD-R, DVD+-R, USB Flash Memory
Wireless Input	Optional Camera Phone Kit - IrDA(FIR, SIR, IrSimple), Bluetooth
File Format	Exif-JPG, Exif-TIFF, JPG(JFIF), TIFF, BMP, FPX, PhoneCD
Display	15" flat tough-panel SAW Display
PC Specifications	Intel 3.0 Ghz Pentium 4, 256MB RAM, Windows XP Professional

GetPix™ VP2 and VP3 Printer Systems

- GetPix™ V5 Kiosk Order Station
- GetPix™ TS Software
- FUJIFILM ASK 2000 6" Dye-Sub Printer
- 450 4"x6" Prints Per Hour / 900pph with VP3
- FUJIFILM ASK 4000 8" Dye-Sub Printer
- 8"x10" Prints in 40 Seconds
- Flatbed Scanner for scanning prints
- Durable, ADA Compliant Cabinetry



Optional Credit Card Kit for Completely Self Service Solution



Camera Phone Upgrade Kit Available (Bluetooth and IrDA)

	GetPix™ VP2	GetPix™ VP3
Dimensions	L 32" x W 23" x H 56"	L 32" x W 21" x H 56"
Power Voltage and Frequency	AC 110V to 240V, 50/60HZ Auto Voltage Switching	
Power Consumption	315 W Max	
Wireless Input	Optional Camera Phone Kit - IrDA(FIR, SIR, IrSimple), Bluetooth	
Input Media	SmartMedia, xD-PictureCard, Xd-PictureCard, CompactFlash, Memory Stick, Memory Stick Duo (Optional), SD Card, SDHC, mini-SD (Optional), MMC, RS-MMC, CD-R, DVD+-R, USB Flash Memory	
File Format	Exif-JPG, Exif-TIFF, JPG(JFIF), TIFF, BMP, FPX, PhoneCD	
Display	15" flat tough-panel SAW Display	
PC Specifications	Intel 3.0 Ghz Pentium 4, 256MB RAM, Windows XP Professional	
Print Speed	4"x6" - 8 Seconds / 8"x10" - 40 Seconds	4"x6" - 4 Seconds / 8"x10" - 40 Seconds
Paper Type	Roll Paper	
Paper Capacity	4"x6" - 600 Prints/ 8"x10" - 200 Prints	4"x6" - 1200 Prints / 8"x10" - 200 Prints
Print Resolution	300dpi	



GetPix™ TS Kiosk Software

Expand your product offering through multiple service levels, while providing customers an easy and intuitive workflow.



- **3 levels of service from a single kiosk**
 - Prints in Minutes
 - Prints in Hours
 - Prints in Days
- **Enhanced offering of greeting cards and borders**
- **Enhanced upsell screens including Photo Gifts**
- **Image enhancing options**
 - Semi Auto red-eye correction
 - Drag and Drop cropping aspect ratio
 - Auto Color Correction
 - Free Flow Text
- **Plug-In Architecture allows for increased scalability and revenue**



Image Intelligence™ uses sophisticated image algorithms to read every single frame as it is being processed and automatically optimizes the print of every image. The latest version now incorporates facial detection to automatically produce natural skin tones and enhance clarity when producing larger size prints.

GetPix™ TS Plug-In Applications

Plug-In Architecture increases revenue by offering innovative ways for customers to enhance their images, and purchase higher margin products.

Photo Book Suite:

- Create a Photo Book
- Customize a 12 Month Calendar
- Personalize Foldable Greeting Cards



Stained Glass Collage:

- Create a Unique Bordered Collage
- Facial Detection and Regions of Interest
Ensure that Every Photo is Centered

Shuffle Print:

- Create a Collage With Your Favorite Images
- Automatically Populates or Select Specific Images



Minimum Hardware Requirements:

Pentium 4 Processor or Higher
512 MB of RAM or Higher for TS Software
1 GB of RAM or Higher for Plug-In Applications

Frontier Dry Minilab 400

The Frontier Dry Minilab 400 is a compact and easy way to produce high quality prints.

Key Features:

- High Quality Technology
- Compact Footprint
- High Performance
- Easy Operation

Benefits:

- FUJIFILM Image Intelligence™ Technology ensures outstanding print quality
- Only 5.38ft² floor space and can be easily converted to a double stack configuration
- Has the ability to print 650 prints/hour and can make up to 10" X 36" prints
- Integrated with Frontier's new Workflow Management Software "MS"



Frontier 700 Series

The Frontier 700 Series gives retailers the opportunity to print high quality, high margin products onsite without sacrificing space.



Frontier 710

- 810 4" x 6" Prints per hour
- Full featured compact design
- 8" Maximum Paper Width



Frontier 750

- 1,180 4" x 6" Prints per hour
- Third and fourth magazine options available
- 12" Maximum Paper Width

FUJIFILM Frontier 700 Series

Sufficient capacity to keep up with retail seasonality

Supports optional SP 500 Film Scanner

Designed with space-conscious retailers in mind

Panorama printing offers retailers a high margin specialty print

Multiple magazines allow for higher productivity

Image Intelligence provides the highest image quality, even from difficult files

Additional models available for higher capacity

Frontier 770 up to 2,120 4" x 6" / hour • Frontier 790 up to 2,360 4" x 6" / hour

Workflow Management Software "MS"

"MS" Software incorporates new technology that allows for scanned film and digital orders to be processed simultaneously.



Collective Order Management:

"MS" collectively processes printing orders and output commands. The software also makes workflow management and preview operations easy, in addition to reducing errors and processing orders quickly.



"MS" expandability can handle various output devices, including multiple networked Frontier units, dye sublimation printers, wide format inkjet printers, and the Xerox Phaser.



Image Intelligence™ has the ability to:

- Smooth and adjust skin tones without affecting the rest of the image.
- Facial detection technology is used to enhance images with graduation adjustment and red-eye correction. It is also used in new services such as ID Photos and Stained Glass applications.



Printing and Binding for Photo Specialty Printing Solutions

The Xerox Phaser 7760 Color Printer is FUJIFILM's solution for producing high quality photo books, greeting cards and calendars quickly and easily. Add to the Frontier Digital Lab System to create Photo Specialty products.



7760/DN



7760/GX

Features

- High resolution color – 1200 x 1200 DPI
- Handles a wide variety of paper stocks for making photo books, greeting cards and calendars
- Produces 35 pages per minute in full vibrant color
- Can handle 150,000 pages per month
- Designed for easy maintenance
- Six line control panel for easy adjustment of color quality

Benefits

- High quality Photo Books, Greeting Cards, and Calendars that appeal to your customers
- Produces a variety of products utilizing different paper stocks.
- Produce specialty in store while your customers wait
- Reliable and sturdy construction ensures more productivity leading to optimum return on investment

Unibind Book Binding System

- Fast, reliable book binding system for high quality photo books
- Produce finished products on site in minutes to deliver to customers
- A wide selection of book covers available in various sizes and colors
- Wire Binding system also available for calendars



Epson/FUJIFILM Stylus Pro 7880

The Epson/FUJIFILM Stylus Pro 7880 is a Wide Format Inkjet Frontier Solution that allows retailers to easily produce high quality large format posters and prints.

- The Epson/FUJIFILM Stylus Pro 7880 can be integrated with the Frontier Photo Image Controller. This includes the new easy Frontier Workflow Management Software "MS" that incorporates FUJIFILM Image Intelligence™.
- The combination of FUJIFILM Photo Paper Satin 270 and Epson UltraChrome K3™ inks can create large poster prints with breathtaking colors and photo quality depth.
- Easily produce poster prints up to 20"x 30" and mounted enlargements up to 20"x24" in a matter of minutes.

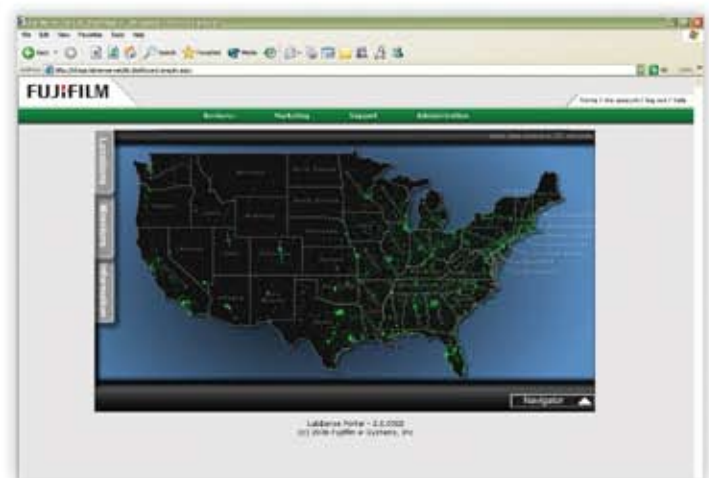


Lab\$ense®

Single control point for all your operations.

Providing business-critical information that allows you to raise the bar on product quality, service levels and competitiveness for all your stores.

FUJIFILM'S New Lab\$ense suite of tools puts the power to proactively build and manage your business into your hands. Incorporated into a custom-designed web portal, Lab\$ense enables you to visualize virtually every aspect of business and with roles-based security, administer changes from a single location.



- Discover what is driving business in each area
- Identify customer behaviors
- Distinguish which promotions are successful
- Determine the most popular types of prints/services
- Observe how customers submit orders
- Track how each piece of equipment is operating

Lab\$ense provides all this and more by Linking, Reporting, and Controlling:

- Entire imaging infrastructure
- Website
- On-site equipment

Get the Picture Online Service

Drive new customers directly to your store

Millions of customers prefer to order their pictures online, often after hours. It's a little known fact...the highest volume of online orders are placed on Sunday nights after 9 PM! With FUJIFILM's Get the Picture Online Service, you are no longer limited to customers who walk into your store with a media card in hand during regular business hours...you can open your doors to new customers worldwide, 24/7.

From the convenience of their own computer or camera phone, your customers simply select their images, sizes, quantities, choose a store location, and place their order. It's that easy!



Access tech-savvy new customers

With Get the Picture Online, you gain access to new customers through FUJIFILM's third party partnerships with Microsoft, Sprint, Cingular/AT&T, Alltel and Boost. These technology-savvy customers prefer to place their orders online. In addition, you benefit from FUJIFILM's own marketing efforts to bring new customers to you through promotion of our store locator at www.fujifilm.com/pictures and on selected camera phone handsets.

Get the Picture Online...A turn-key solution

With FUJIFILM's Get the Picture Online Service you can be up and running in no time, with minimal investment in technology. FUJIFILM provides you with the technical infrastructure to receive and process online orders. You get your own branded web pages, e-commerce capability, and a full suite of editing tools that enable your customers to create their perfect picture. If you wish, you can choose to offer pick-up in stores, U.S. mail delivery, or both.

Tools to manage your site

You are in control of deciding what specific products and services you offer, as well as pricing and turn around time. You set your own privacy policies and terms and conditions. An administrative tool helps you update your web pages whenever you like to change products, pricing, and promotion.

The best technology, the best equipment, the best pictures

FUJIFILM's Get the Picture Online Service offers your customers best-in-class online order capability, picture quality, and convenience. To participate in the FUJIFILM Get the Picture Online Service, you must own a Frontier Digital Lab System with a PIC 2.6 or greater or a GetPix Kiosk with software version 4.0 or greater. A high-speed internet connection to each of your locations is also required.



New!

We've launched some exciting new products for our GTPOS customers. Maximize revenue and profits with higher ticket gift items. We now offer coffee mugs, t-shirts, sweatshirts, mouse pads, magnets, playing cards, stickers, and more! Ask your salesman for details on setting up a GTPOS website.